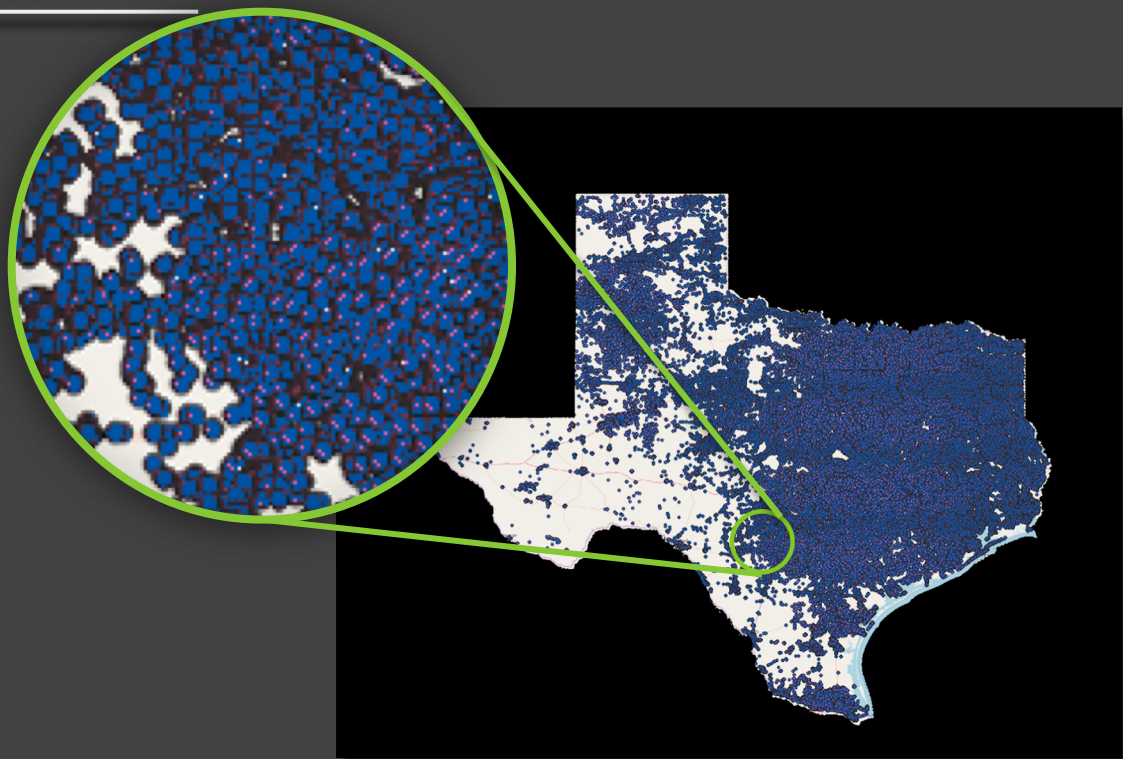


Polygon Generation for Voter Files

Accuracy | Utility | Adaptability

If KNOWLEDGE is Power...

..then data can be
overwhelming



siegeanalytics

All Voters

INTUITIVE TOOLS Inform Action: Findings *Should* be Legible

Does this look
like a precinct
map to you?

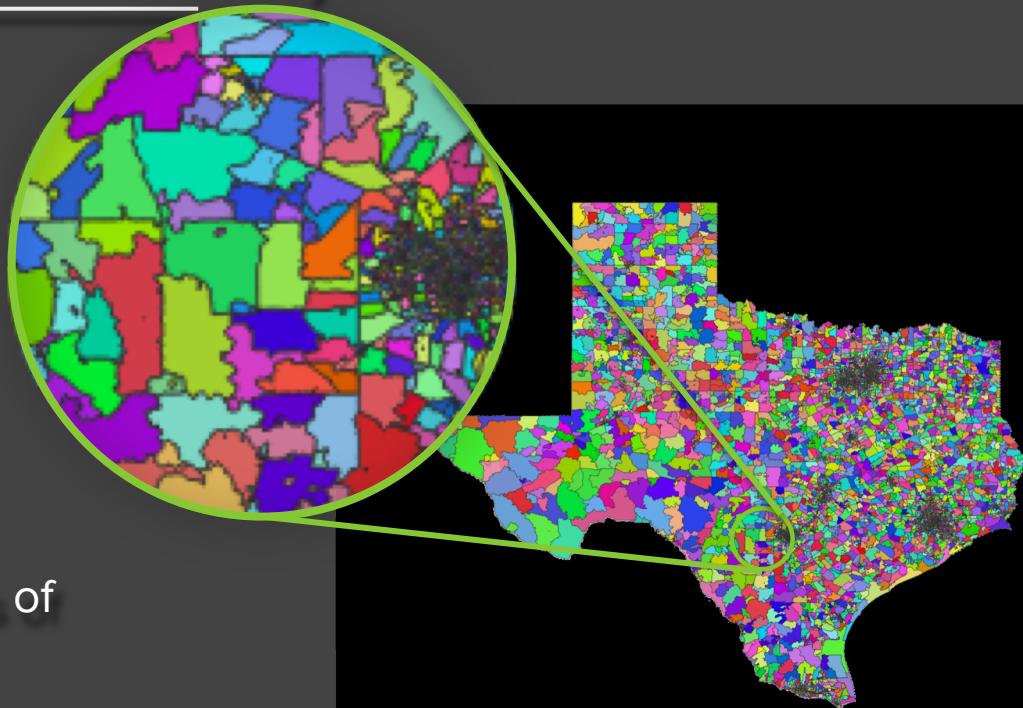


SMARTER MAPS: Polygons & Boundary Estimation

Intuitive - See voters by
precinct

Accurate - Flags Errors

Empowering - New Class of
Derivative Tools



siegeanalytics

All Precincts, Containing All Voters

We Already Do Good Work



We supply every boundary PDI uses, from precinct level election analysis, to their DMP and CRM platforms.



Dheeraj donated precinct shapefiles to Beto O'Rourke's 2018 bid to unseat Texas incumbent Sen. Ted Cruz. These were leveraged in the unprecedented decentralization of Field & Volunteer empowerment, allowing volunteer initiated outreach, driving impact at scale



We supply regional precinct files, redistricting analysis, and spatial analysis of their chapter distribution - DE, RI



Precinct shapefiles, redistricting analysis - VA

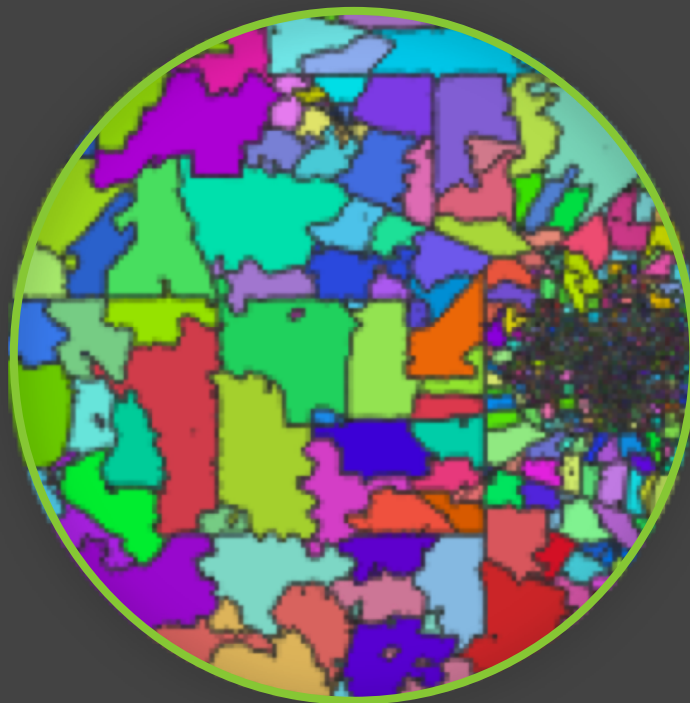
The logo for siegeanalytics features the word "siegeanalytics" in a bold, white, sans-serif font on a black background, with a small white graphic element to the left.

SHORT TERM - Increase Accuracy of Voter Data File

Flag Errors - See the errors

Track YoY - Better info
every year

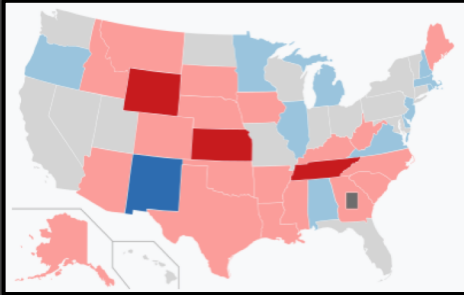
Institutional Knowledge -
Carries over from year-to-year



LONGER TERM - Leverage Data Produced in New Tools

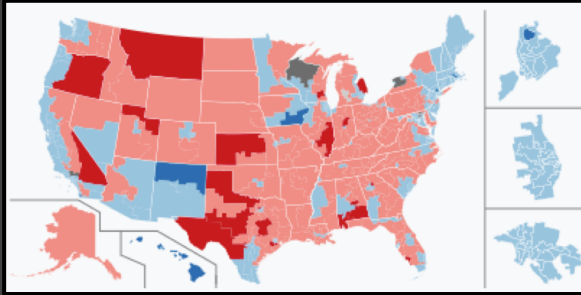
- Voter Registration / Contact
- “Cutting Turf” / Field
- Redistricting
- Fundraising
- etc

2020: Up for Grabs - When can we follow-up?



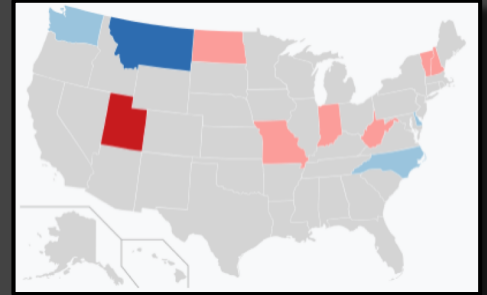
Senate

35 seats



House

435 seats



Gubernatorial

13 seats